

# Karré 1

## Saltværkstræde 9, st.

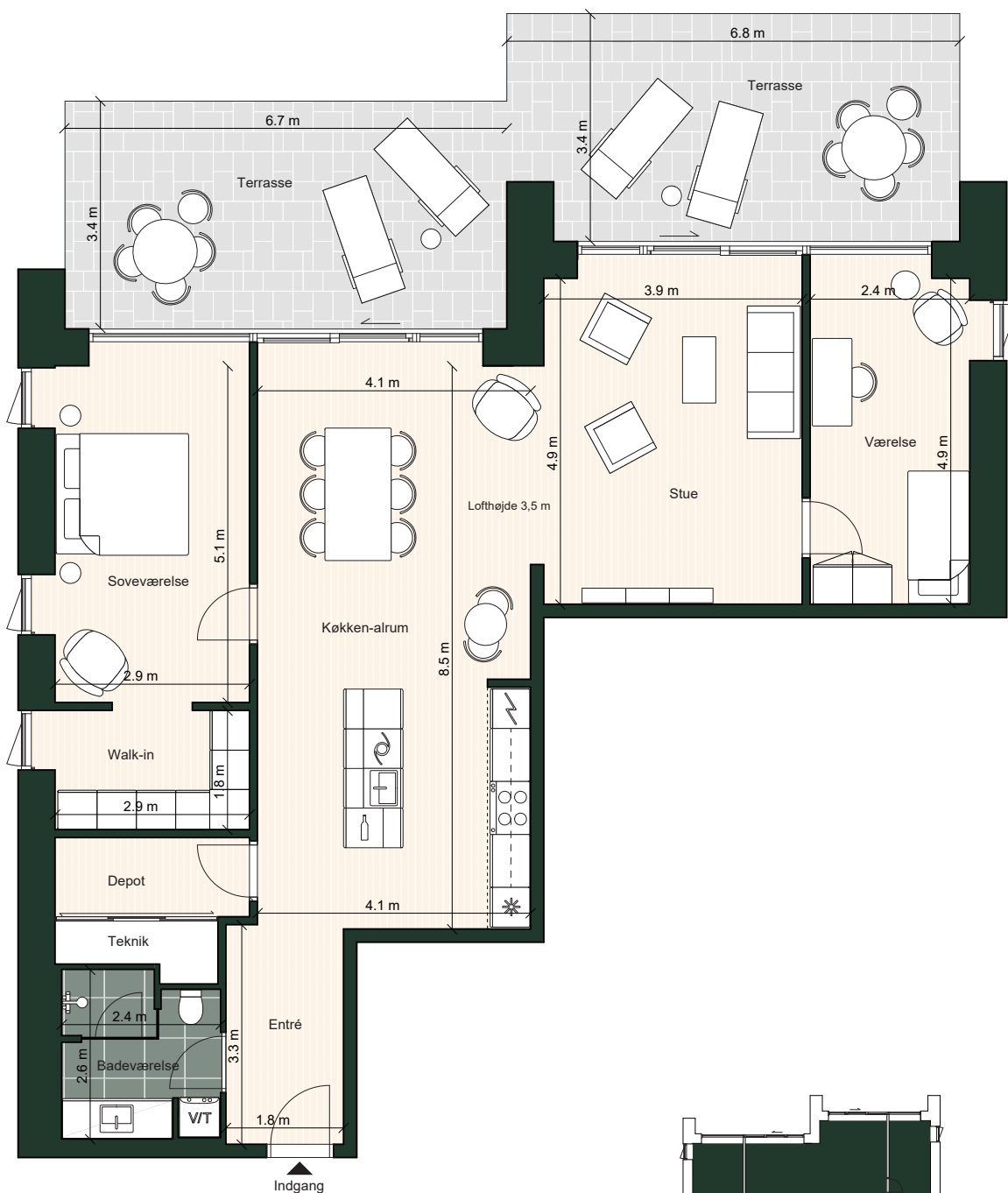
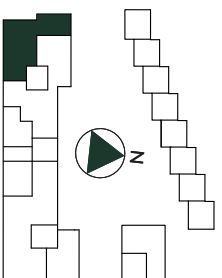
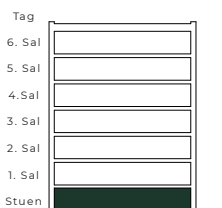


Lejlighedsnr.: 1  
 Værelser: 3  
 Boligareal: 132 m<sup>2</sup>  
 BBR-areal: 146 m<sup>2</sup>  
 Terrasse: 23 + 23 m<sup>2</sup>

Adresse:  
 Saltværkstræde 9, st.

\_\_\_\_\_

-  Køle - / Fryseskab
-  Kogeplade
-  Ovn
-  Tørretumbler
-  Vaskemaskine
-  Fast skab
-  Overskab
-  Opvaskemaskine
-  Inddækningskasse
-  Vinkøleskab




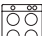
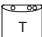
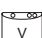
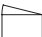



# Karré 1

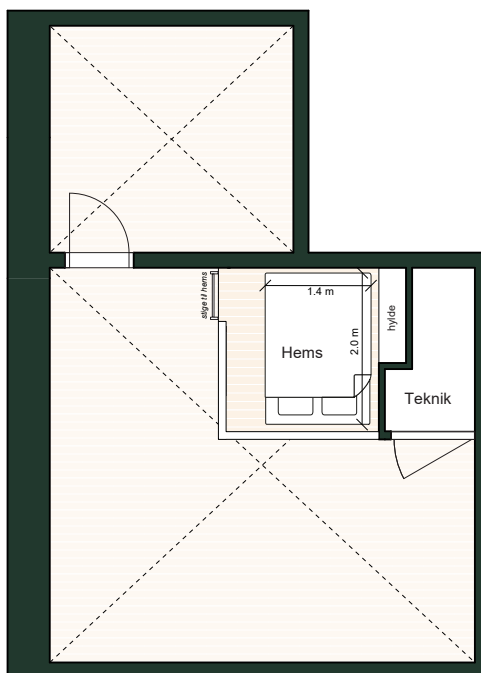
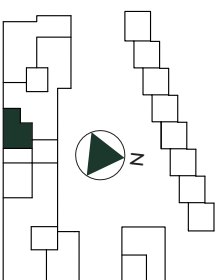
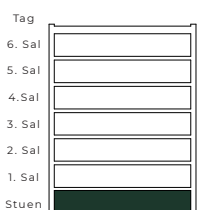
## Saltværkstræde 7



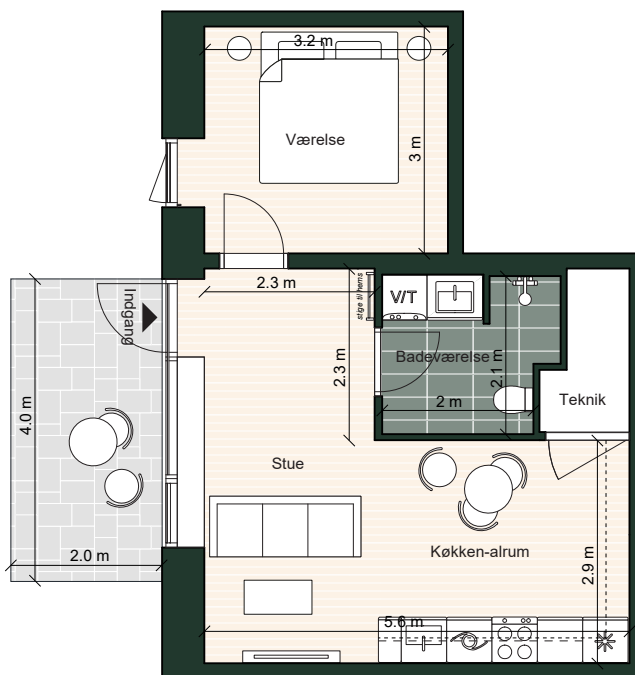
Lejlighedsnr.: 2  
 Værelser: 2  
 Boligareal: 49 m<sup>2</sup>  
 BBR-areal: 49 m<sup>2</sup>  
 Terrasse: 8 m<sup>2</sup>  
 Hems: 5 m<sup>2</sup>

Adresse:  
 Saltværkstræde 7

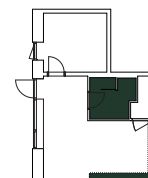
-  Køle - / Fryseskab
-  Kogeplade m. ovn
-  Tørretumbler
-  Vaskemaskine
-  Fast skab
-  Overskab
-  Opvaskemaskine
-  Inddækningskasse



Hems



Stueplan



Områder med nedsænkede lofter


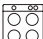
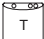
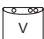


# Karré 1

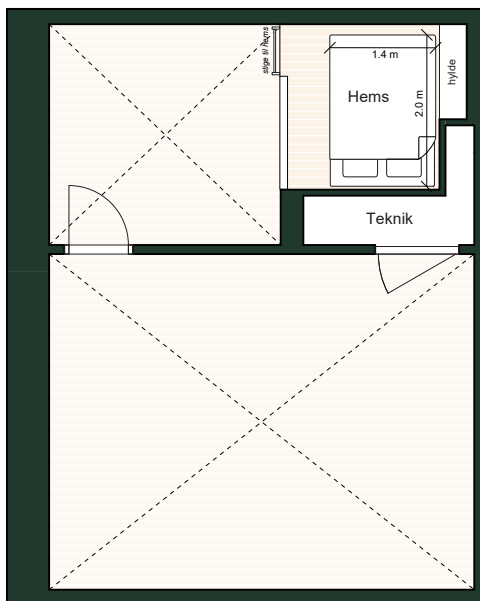
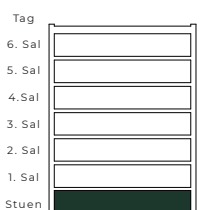
## Saltværkstræde 3



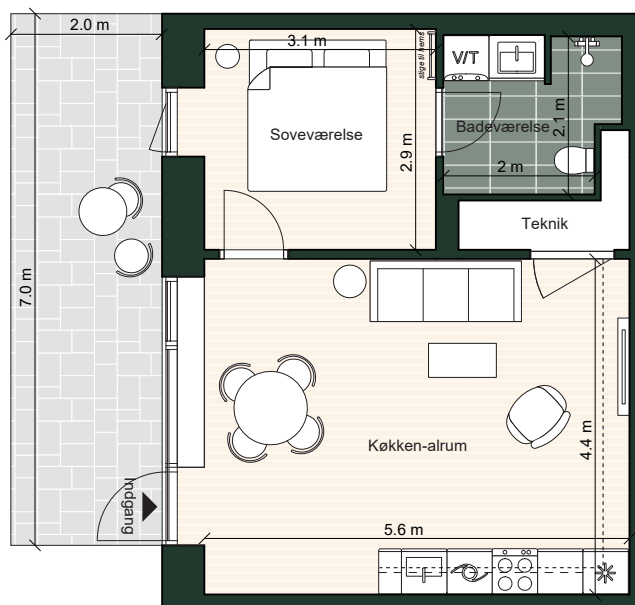
Lejlighedsnr.: 3  
 Værelser: 2  
 Boligareal: 50 m<sup>2</sup>  
 BBR-areal: 50 m<sup>2</sup>  
 Terrasse: 14 m<sup>2</sup>  
 Hems: 5 m<sup>2</sup>

Adresse:  
 Saltværkstræde 3

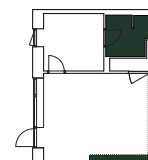
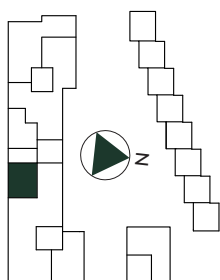
-  Køle - / Fryseskab
-  Kogeplade m. ovn
-  Tørretumbler
-  Vaskemaskine
-  Fast skab
-  Overskab
-  Opvaskemaskine
-  Inddækningskasse



Hems



Stueplan



Områder med nedsænkede lofter


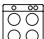
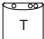
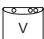



# Karré 1

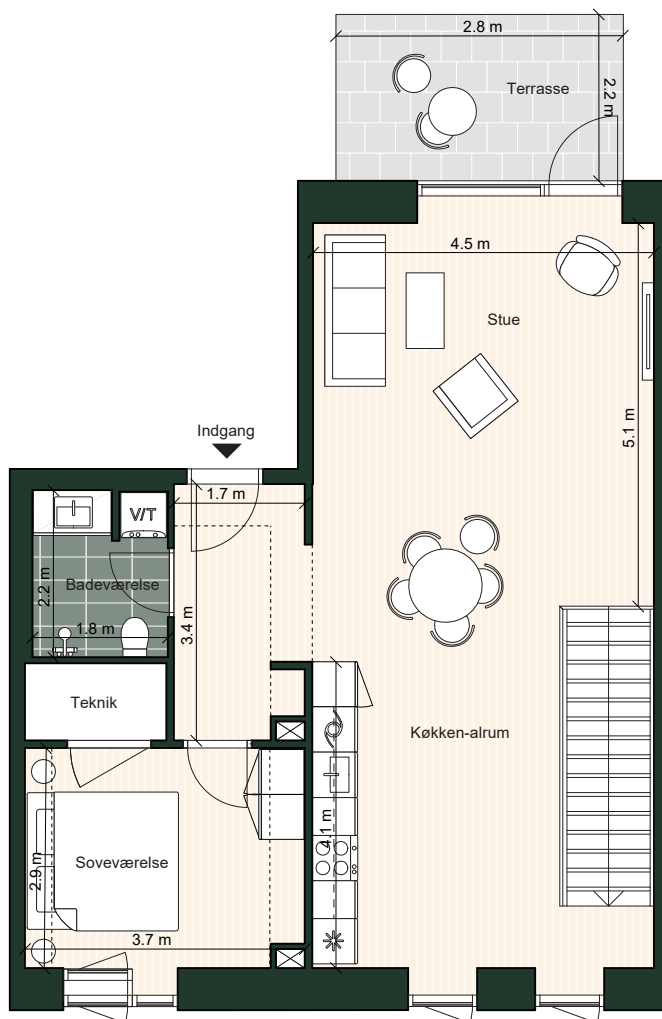
## Havnegade 10A, 1. sal, lejl. 1



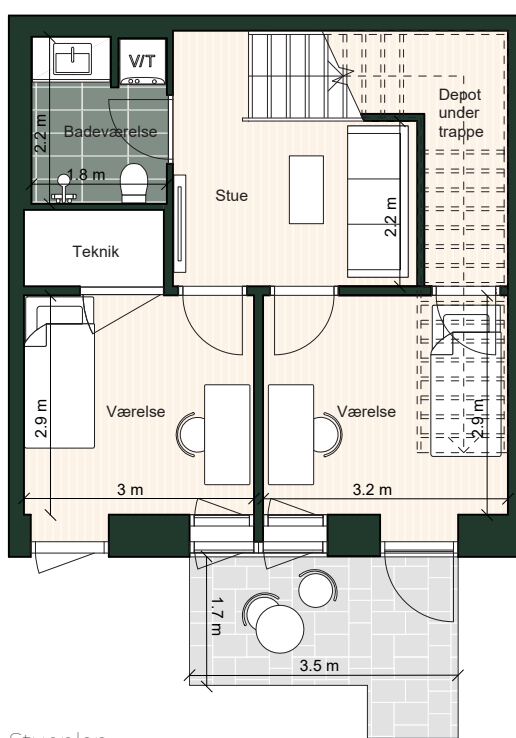
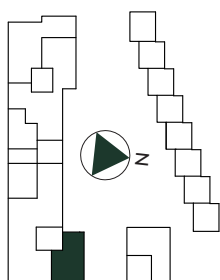
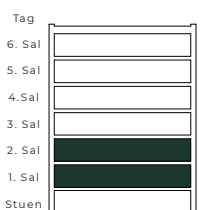
Lejlighedsnr.: 5  
 Værelser: 4  
 Boligareal: 131 m<sup>2</sup>  
 BBR-areal: 142 m<sup>2</sup>  
 Terrasse: 10 + 8 m<sup>2</sup>

Adresse:  
 Havnegade 10A, 1. sal, lejl. 1

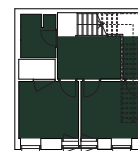
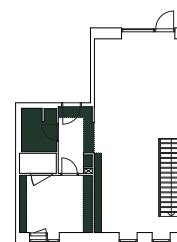
-  Køle - / Fryseskab
-  Kogeplade m. ovn
-  Tørretumbler
-  Vaskemaskine
-  Fast skab
-  Overskab
-  Opvaskemaskine
-  Inddækningskasse



1. sal



Stueplan



Områder med nedsænkede lofter

# Karré 1

## Trælaststræde 4, 6, 8, 10, 12, 16



Lejlighedsnr.: 6, 7, 8, 9, 10, 12

Værelser: 1

Boligareal: 33-38 m<sup>2</sup>

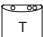
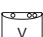
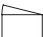


BBR-areal: 33-38 m<sup>2</sup>

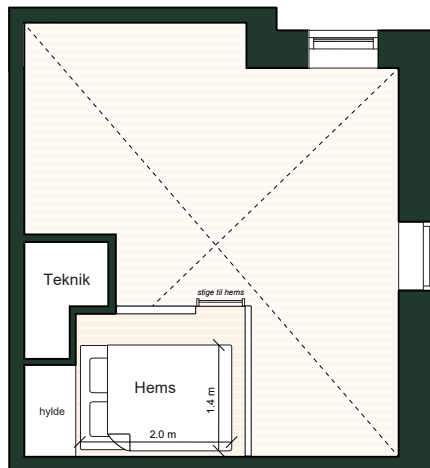
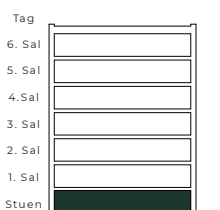
Terrasse: 7 m<sup>2</sup>

Hems: 5 m<sup>2</sup>

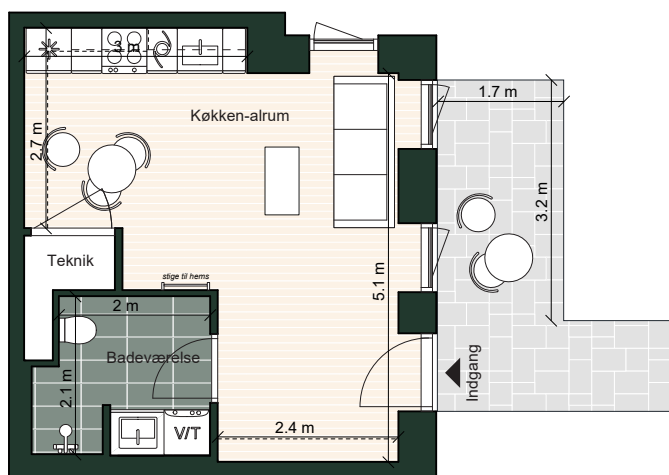
Adresse:

Trælaststræde 4, 6, 8, 10, 12, 16

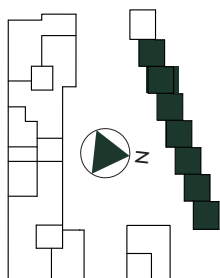
-  Køle - / Fryseskab
-  Kogeplade m. ovn
-  Tørretumbler
-  Vaskemaskine
-  Fast skab
-  Overskab
-  Opvaskemaskine
-  Inddækningskasse



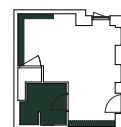
Hems



Stueplan



1:100 1 2 3 4 5m



Områder med nedsænkede lofter


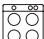
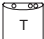
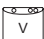




# Karré 1

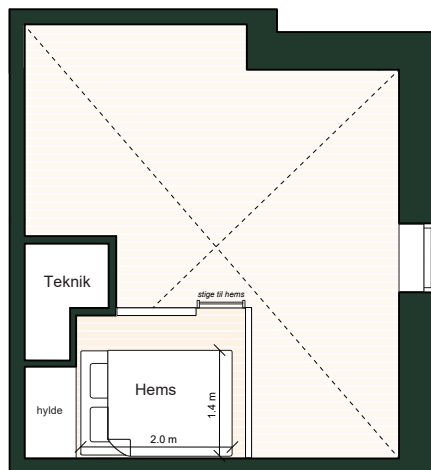
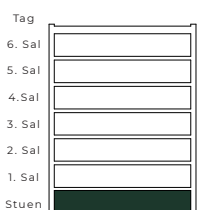
## Trælaststræde 14



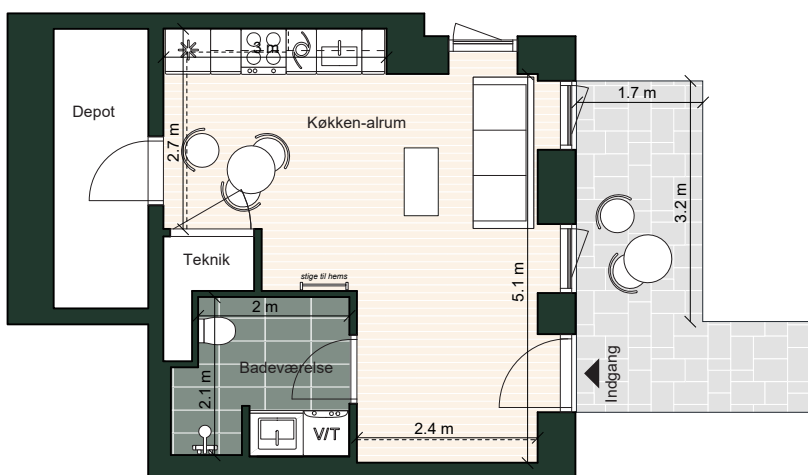
Lejlighedsnr.: 11  
 Værelser: 1  
 Boligareal: 41 m<sup>2</sup>  
 BBR-areal: 41 m<sup>2</sup>  
 Terrasse: 7 m<sup>2</sup>  
 Hems: 5 m<sup>2</sup>

Adresse:  
 Trælaststræde 14

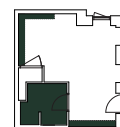
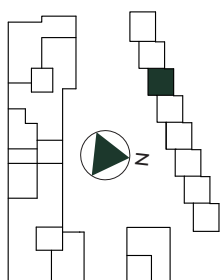
-  Køle - / Fryseskab
-  Kogeplade m. ovn
-  Tørretumbler
-  Vaskemaskine
-  Fast skab
-  Overskab
-  Opvaskemaskine
-  Inddækningskasse



Hems



Stueplan



Områder med nedsænkede lofter

# Karré 1

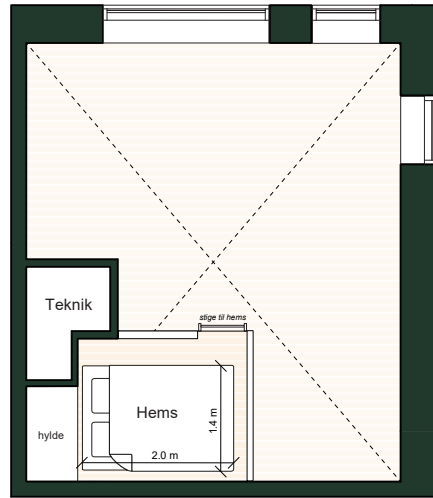
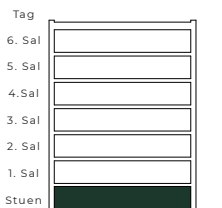
## Trælaststræde 18



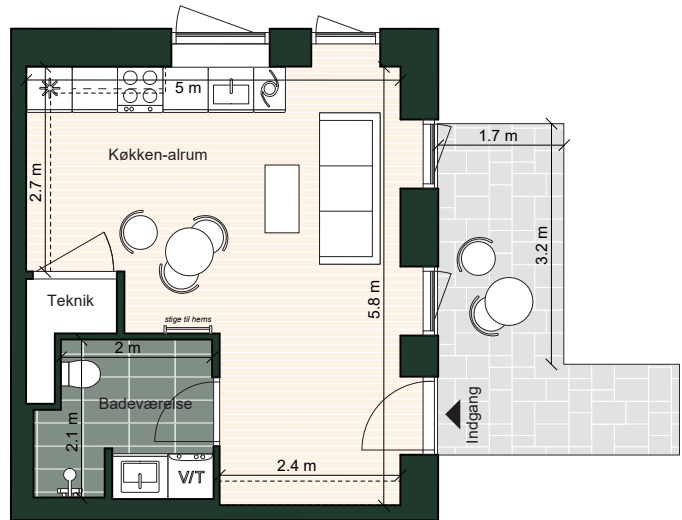
Lejlighedsnr.: 13  
 Værelser: 1  
 Boligareal: 35 m<sup>2</sup>  
 BBR-areal: 35 m<sup>2</sup>  
 Terrasse: 7 m<sup>2</sup>  
 Hems: 5 m<sup>2</sup>

Adresse:  
 Trælaststræde 18

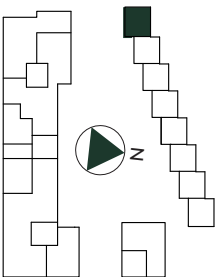
-  Køle - / Fryseskab
-  Kogeplade m. ovn
-  Tørretumbler
-  Vaskemaskine
-  Fast skab
-  Overskab
-  Opvaskemaskine
-  Inddækningskasse



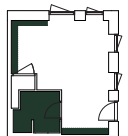
Hems



Stueplan



1:100 1 2 3 4 5m



Områder med nedsænkede lofter

# Karré 1

## Saltværkstræde 9, 1.-3. sal, 5.-6. sal, th



Lejlighedsnr.: 15, 34, 46, 62, 66

Værelser: 3

Boligareal: 130-134 m<sup>2</sup>

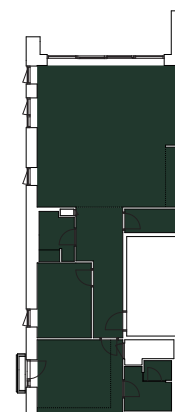
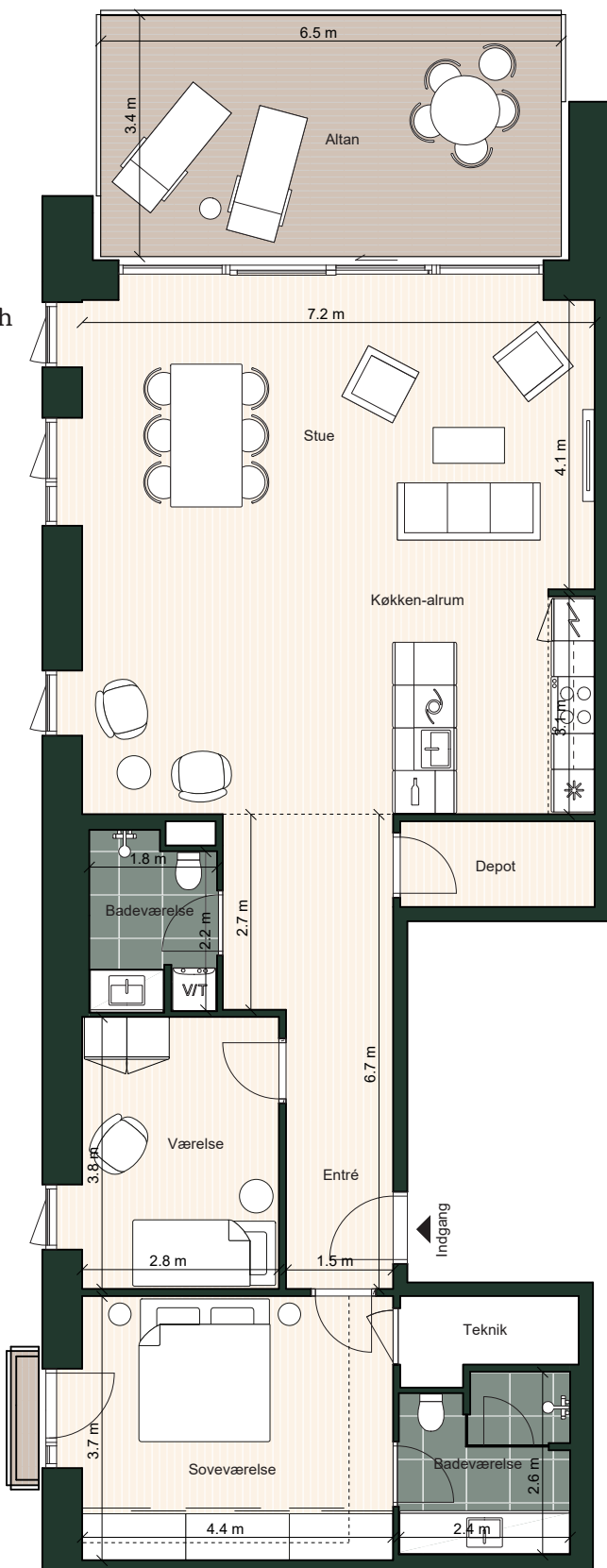
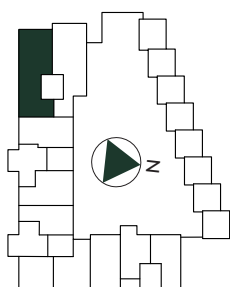
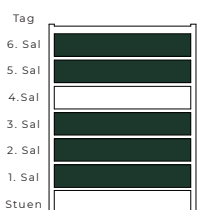
BBR-areal: 145-148 m<sup>2</sup>

Altan: 1 + 23 m<sup>2</sup>

Adresse:

Saltværkstræde 9, 1.-3. sal, 5.-6. sal, th

-  Køle - / Fryseskab
-  Kogeplade
-  Ovn
-  Tørretumbler
-  Vaskemaskine
-  Fast skab
-  Overskab
-  Opvaskemaskine
-  Inddækningskasse
-  Vinkøleskab



Områder med nedsænkede lofter



# Karré 1

## Saltværkstræde 9, 1.-4. sal, tv



Lejlighedsnr.: 16, 35, 47, 59

Værelser: 3

Boligareal: 119-121 m<sup>2</sup>

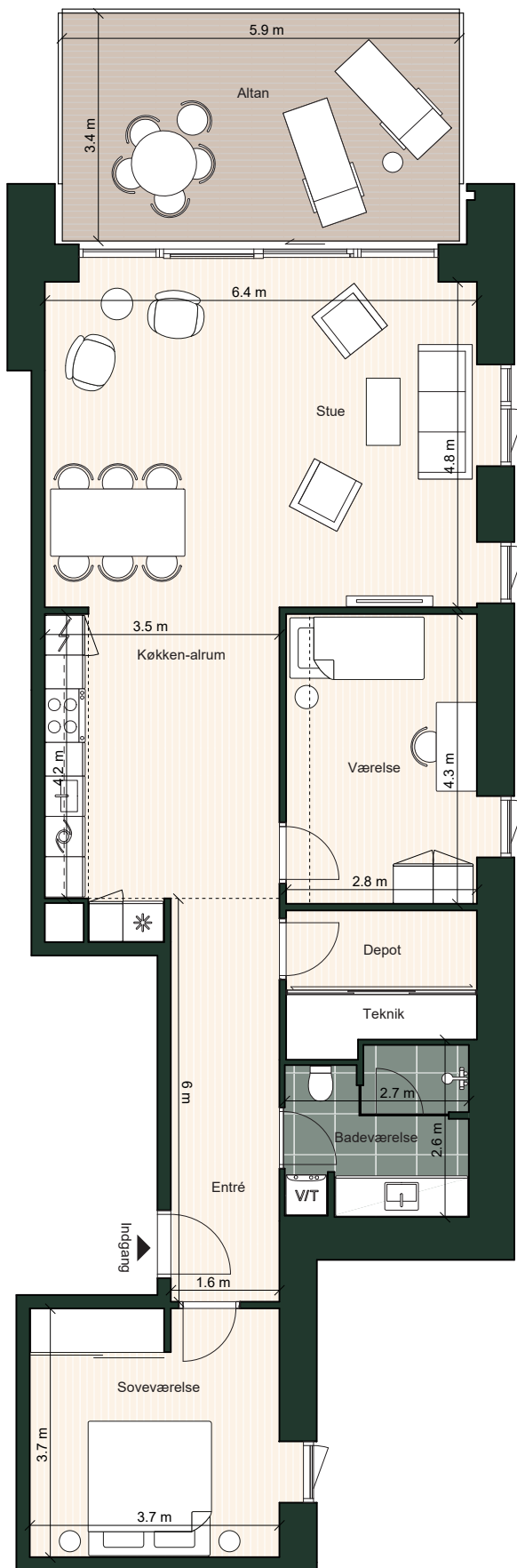
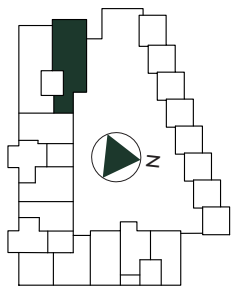
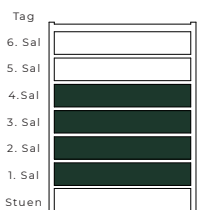
BBR-areal: 134-136 m<sup>2</sup>

Altan: 21 m<sup>2</sup>

Adresse:

Saltværkstræde 9, 1.-4. sal, tv

-  Køle - / Fryseskab
-  Kogeplade
-  Ovn
-  Tørretumbler
-  Vaskemaskine
-  Fast skab
-  Overskab
-  Opvaskemaskine
-  Inddækningskasse



Områder med nedsænkede lofter

# Karré 1

## Saltværkstræde 9, 5.-6. sal, tv

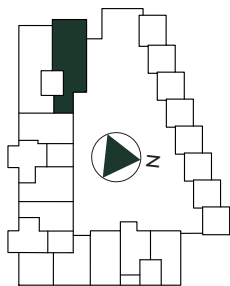
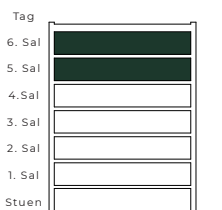


Lejlighedsnr.: 63, 67  
Værelser: 3  
Boligareal: 121 m<sup>2</sup>  
BBR-areal: 136 m<sup>2</sup>  
Altan: 21 m<sup>2</sup>

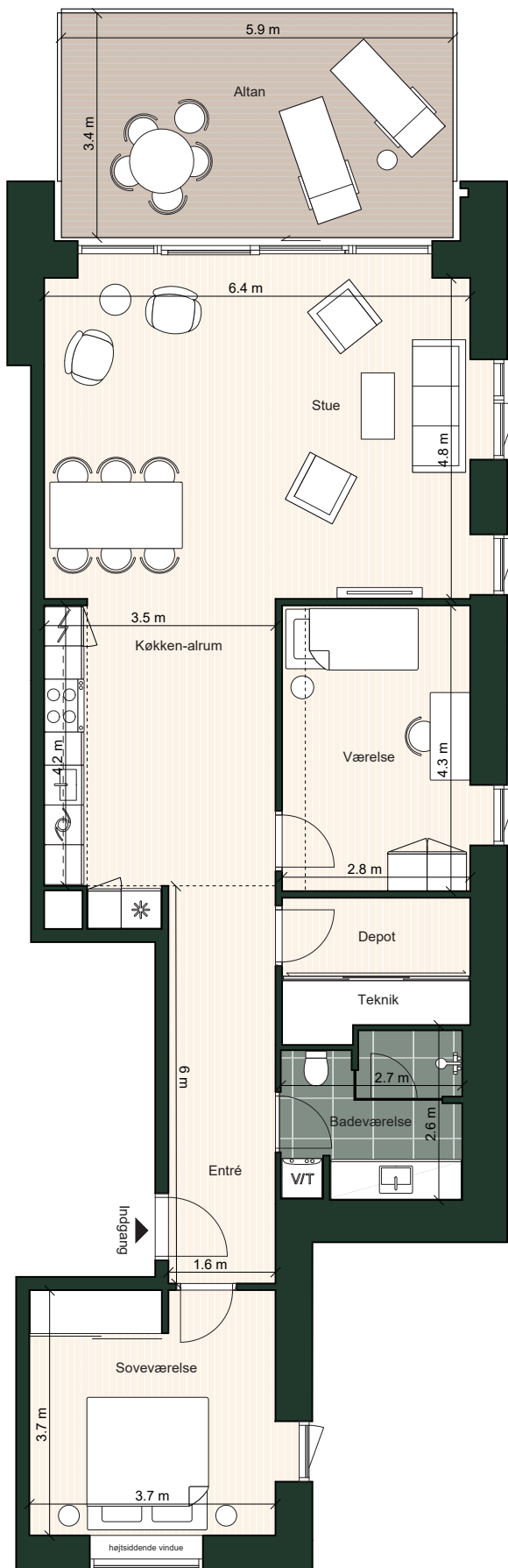
### Adresse:

Saltværkstræde 9, 5.-6. sal, tv

-  Køle - / Fryseskab
-  Kogeplade
-  Ovn
-  Tørretumbler
-  Vaskemaskine
-  Fast skab
-  Overskab
-  Opvaskemaskine
-  Inddækningskasse



1:100 1 2 3 4 5m



Områder med nedsænkede lofter


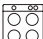
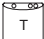
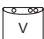


# Karré 1

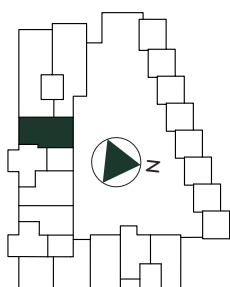
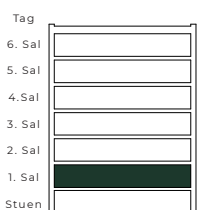
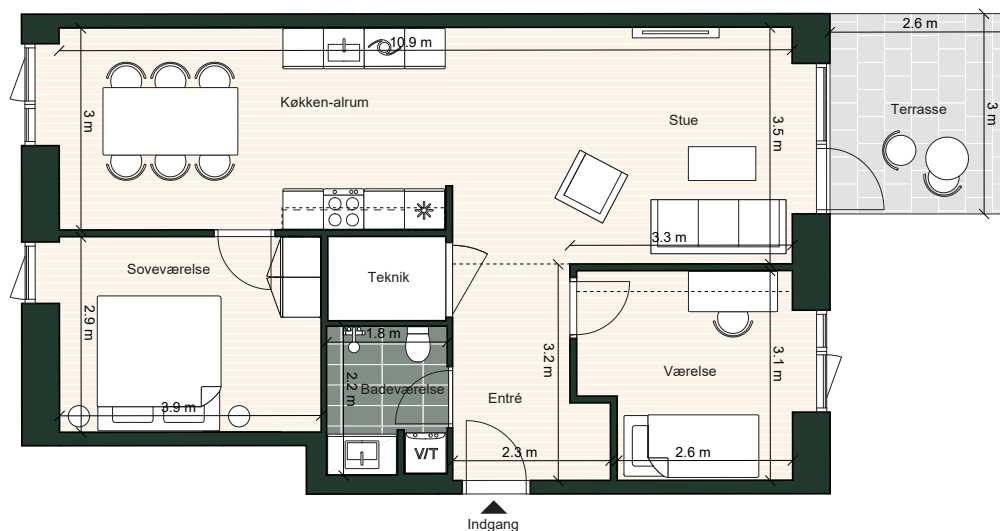
## Saltværkstræde 5, 1. sal, th



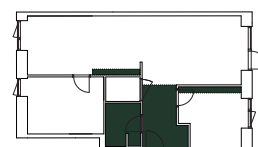
Lejlighedsnr.: 17  
Værelser: 3  
Boligareal: 80 m<sup>2</sup>  
BBR-areal: 89 m<sup>2</sup>  
Terrasse: 8 m<sup>2</sup>

Adresse:  
Saltværkstræde 5, 1. sal, th

-  Køle - / Fryseskab
-  Kogeplade m. ovn
-  Tørretumbler
-  Vaskemaskine
-  Fast skab
-  Overskab
-  Opvaskemaskine
-  Inddækningskasse



1:100 1 2 3 4 5m



Områder med nedsænkede lofter

# Karré 1


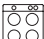
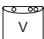



## Saltværkstræde 5, 1.-3. sal, mf

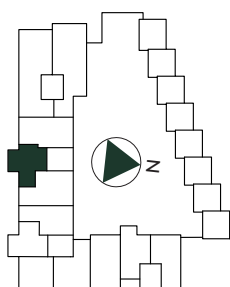
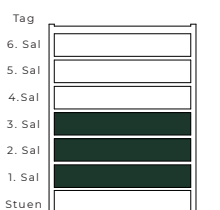
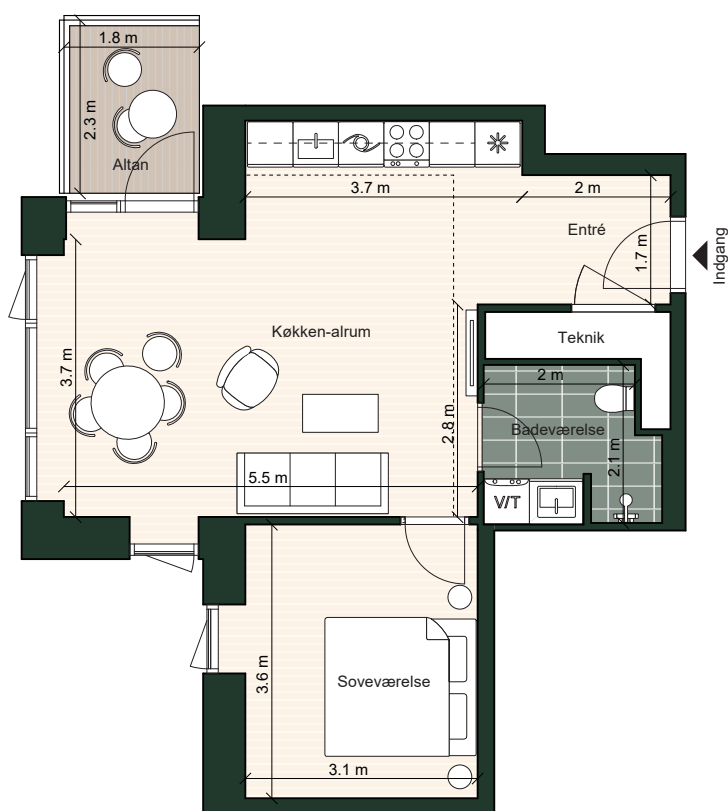


Lejlighedsnr.: 18, 37, 49  
Værelser: 2  
Boligareal: 59 m<sup>2</sup>  
BBR-areal: 67 m<sup>2</sup>  
Altan: 5 m<sup>2</sup>

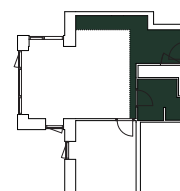
Adresse:

Saltværkstræde 5, 1.-3. sal, mf

-  Køle - / Fryseskab
-  Kogeplade m. ovn
-  Tørretumbler
-  Vaskemaskine
-  Fast skab
-  Overskab
-  Opvaskemaskine
-  Inddækningskasse



1:100 1 2 3 4 5m



Områder med nedsænkede lofter



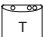
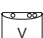
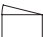



# Karré 1

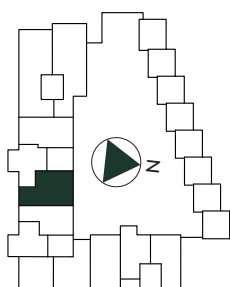
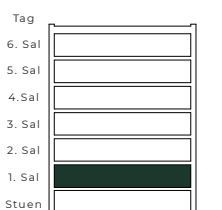
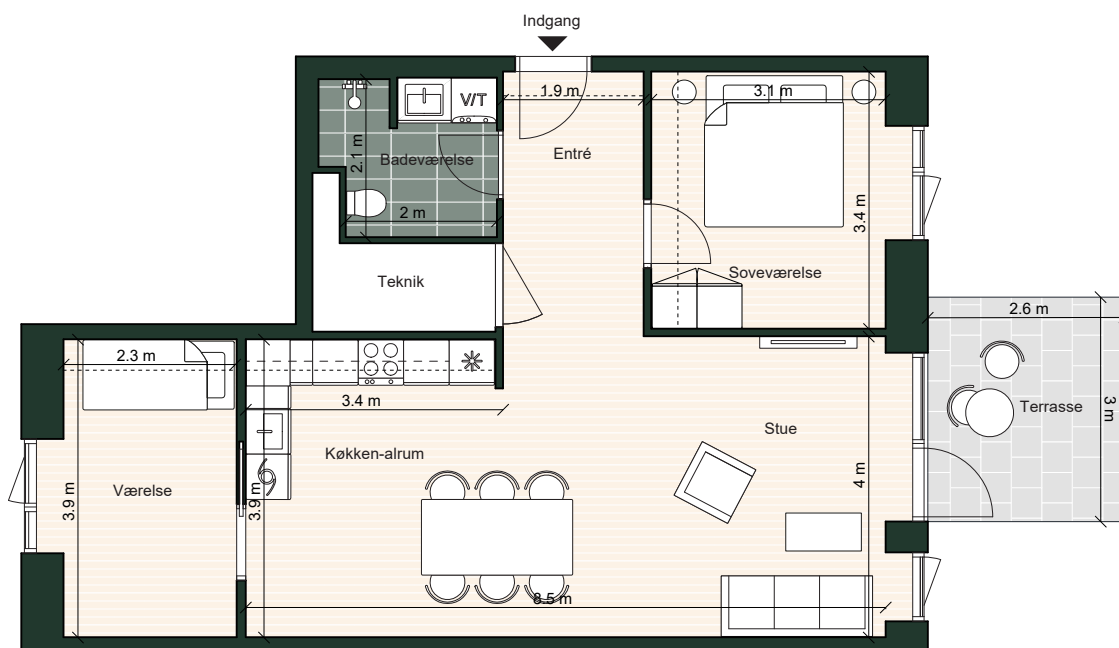
## Saltværkstræde 5, 1. sal, tv



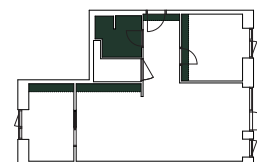
Lejlighedsnr.: 19  
Værelser: 3  
Boligareal: 79 m<sup>2</sup>  
BBR-areal: 88 m<sup>2</sup>  
Terrasse: 8 m<sup>2</sup>

Adresse:  
Saltværkstræde 5, 1. sal, tv

-  Køle - / Fryseskab
-  Kogeplade m. ovn
-  Tørretumbler
-  Vaskemaskine
-  Fast skab
-  Overskab
-  Opvaskemaskine
-  Inddækningskasse



1:100 1 2 3 4 5m



Områder med nedsænkede lofter



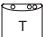
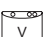
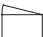



# Karré 1

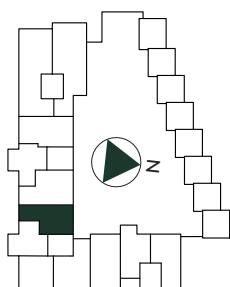
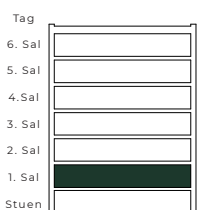
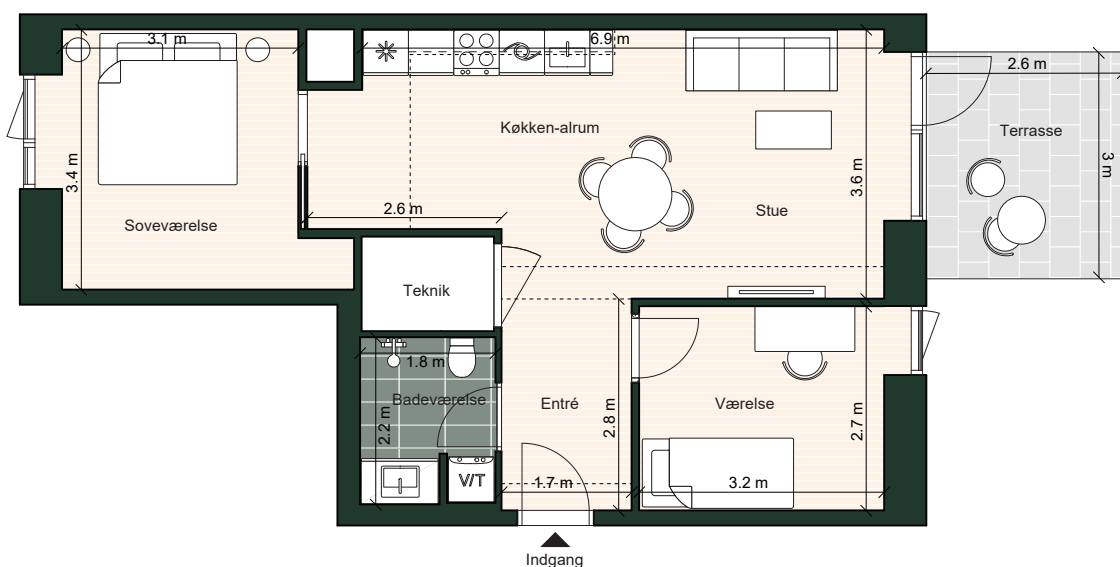
## Havnegade 10A, 1. sal, lejl. 4



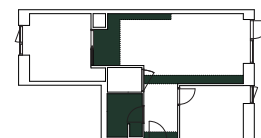
Lejlighedsnr.: 20  
Værelser: 3  
Boligareal: 67 m<sup>2</sup>  
BBR-areal: 78 m<sup>2</sup>  
Terrasse: 8 m<sup>2</sup>

Adresse:  
Havnegade 10A, 1. sal, lejl. 4

-  Køle - / Fryseskab
-  Kogeplade m. ovn
-  Tørretumbler
-  Vaskemaskine
-  Fast skab
-  Overskab
-  Opvaskemaskine
-  Inddækningskasse



1:100 1 2 3 4 5m



Områder med nedsænkede lofter

## Karré 1

# Havnegade 10A, 1.-3. sal, lejl. 3



Lejlighedsnr.: 21, 40, 52

Værelser: 2



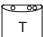


Boligareal: 55 m<sup>2</sup>

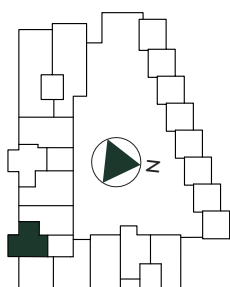
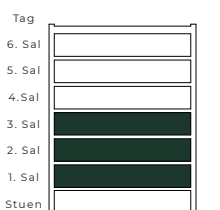
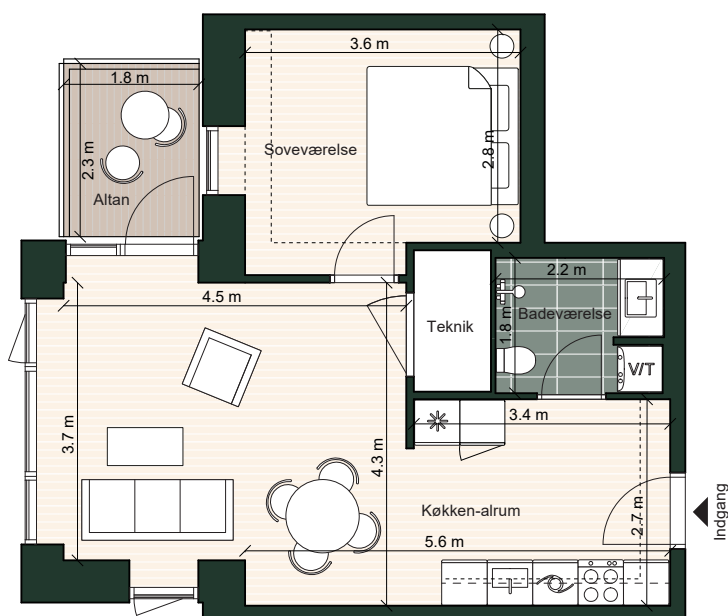
BBR-areal: 66 m<sup>2</sup>

Altan: 5 m<sup>2</sup>

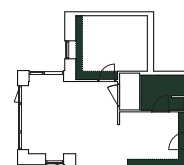
### Adresse:

Havnegade 10A, 1.-3. sal, lejl. 3

-  Køle - / Fryseskab
-  Kogeplade m. ovn
-  Tørretumbler
-  Vaskemaskine
-  Fast skab
-  Overskab
-  Opvaskemaskine
-  Inddækningskasse



1:100 1 2 3 4 5m



Områder med nedsænkede lofter

## Karré 1

# Havnegade 10A, 1.-3. sal, lejl. 2



Lejlighedsnr.: 22, 41, 53

Værelser: 2



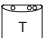
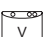



Boligareal: 55 m<sup>2</sup>

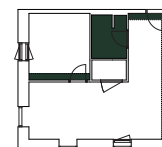
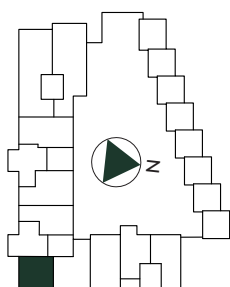
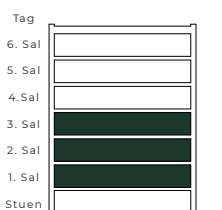
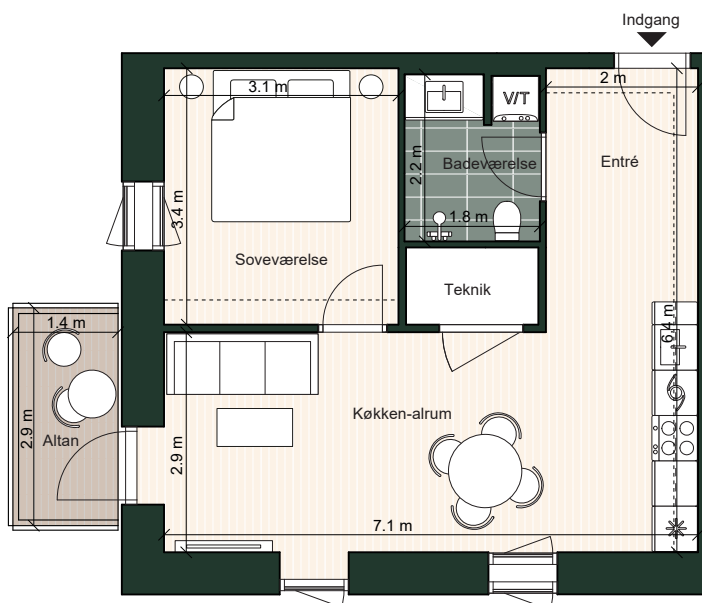
BBR-areal: 66 m<sup>2</sup>

Altan: 5 m<sup>2</sup>

### Adresse:

Havnegade 10A, 1.-3. sal, lejl. 2

-  Køle - / Fryseskab
-  Kogeplade m. ovn
-  Tørretumbler
-  Vaskemaskine
-  Fast skab
-  Overskab
-  Opvaskemaskine
-  Inddækningskasse



Områder med nedsænkede lofter





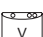
# Karré 1

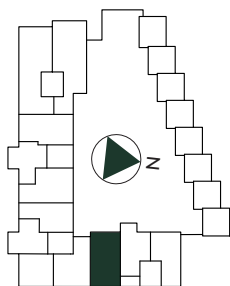
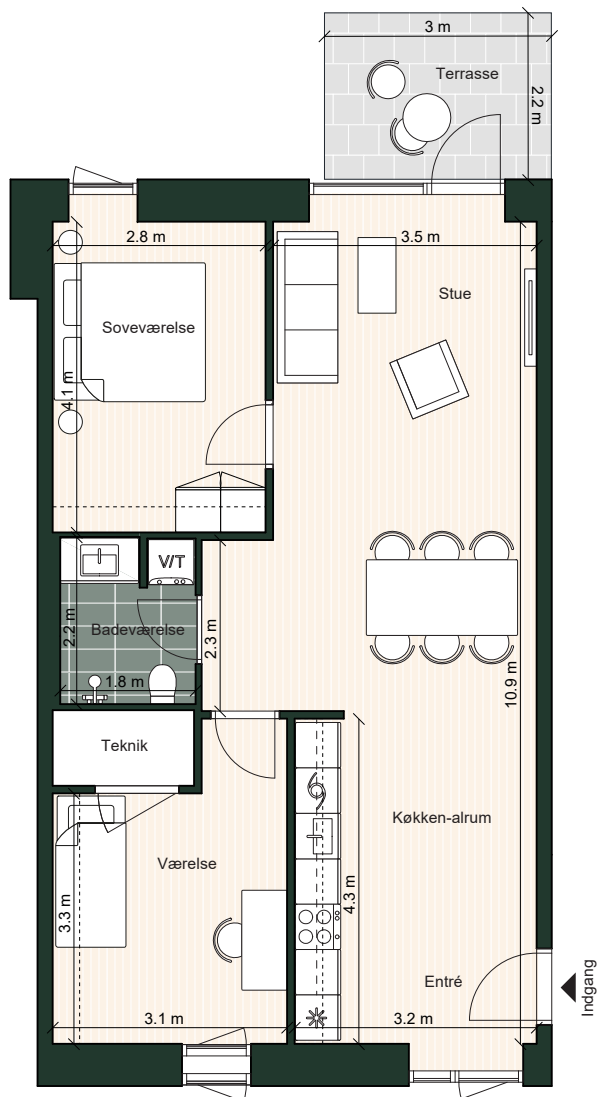
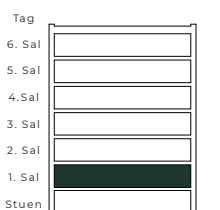
## Havnegade 10, 1. sal, th



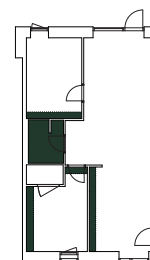
Lejlighedsnr.: 23  
Værelser: 3  
Boligareal: 80 m<sup>2</sup>  
BBR-areal: 96 m<sup>2</sup>  
Terrasse: 7 m<sup>2</sup>

Adresse:  
Havnegade 10, 1. sal, th

-  Køle - / Fryseskab
-  Kogeplade m. ovn
-  Tørretumbler
-  Vaskemaskine
-  Fast skab
-  Overskab
-  Opvaskemaskine
- Inddækningskasse



1:100 1 2 3 4 5m



Områder med nedsænkede lofter

Tegningen er vejledende og ikke endelig målfast  
Version: september 2023.

Vinduesplacering kan være forskellig for de enkelte lejligheder

# Karré 1



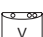




## Havnegade 10, 1. sal, mf

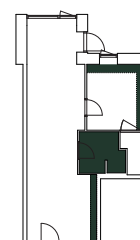
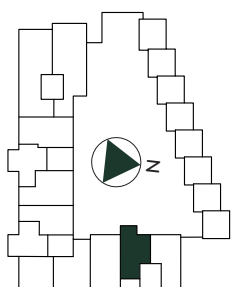
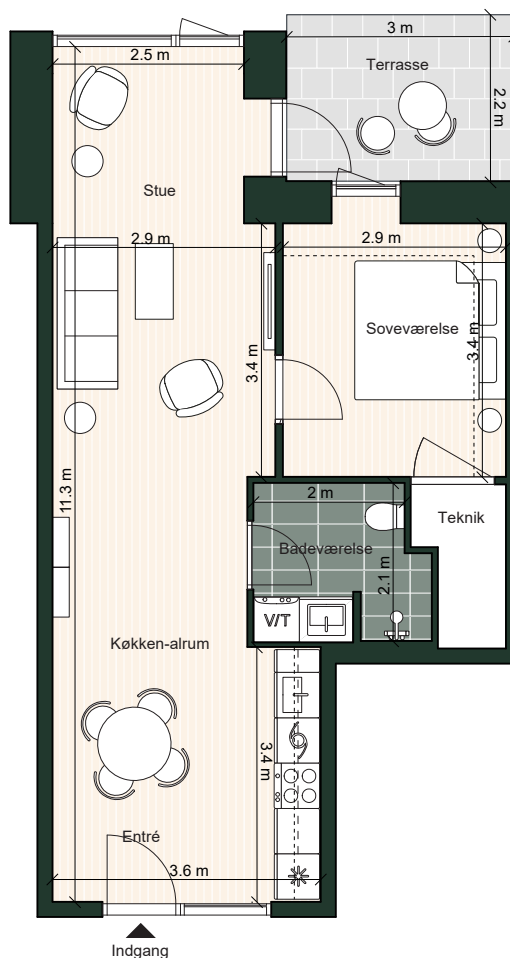
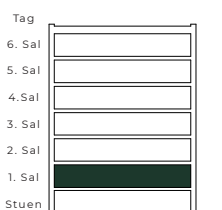


Lejlighedsnr.: 24  
Værelser: 2  
Boligareal: 59 m<sup>2</sup>  
BBR-areal: 75 m<sup>2</sup>  
Terrasse: 7 m<sup>2</sup>

Adresse:

Havnegade 10, 1. sal, mf

-  Køle - / Fryseskab
-  Kogeplade m. ovn
-  Tørretumbler
-  Vaskemaskine
-  Fast skab
-  Overskab
-  Opvaskemaskine
-  Inddækningskasse



Områder med nedsænkede lofter

Tegningen er vejledende og ikke endelig målfast  
Version: september 2023.

Vinduesplacering kan være forskellig for de enkelte lejligheder


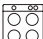
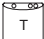
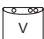

# Karré 1

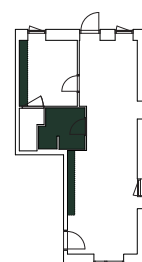
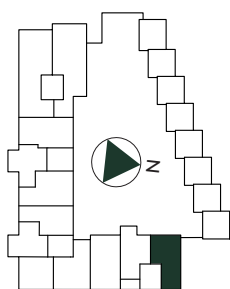
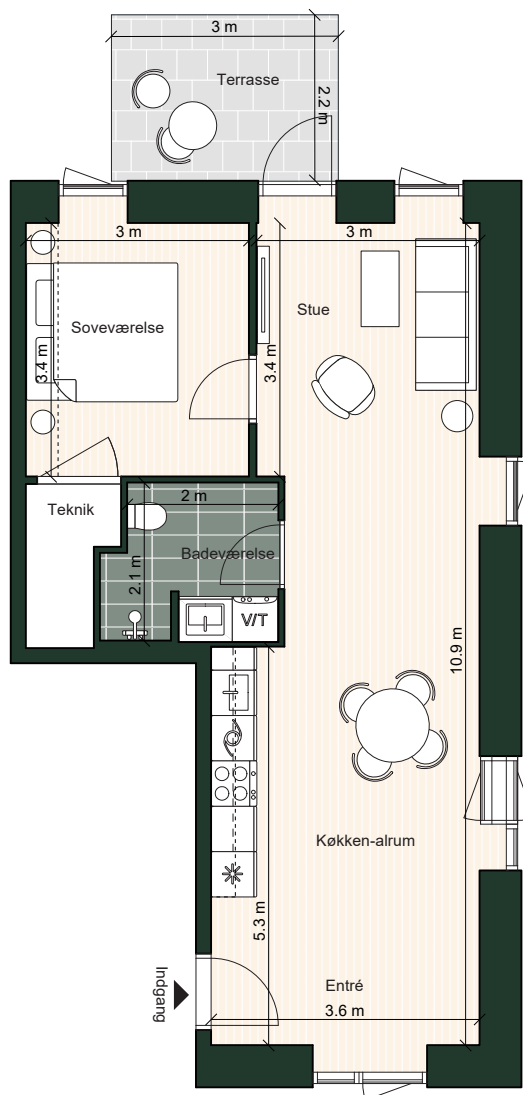
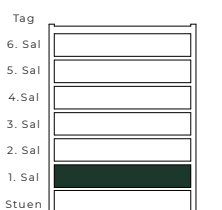
## Havnegade 10, 1. sal, tv



Lejlighedsnr.: 25  
Værelser: 2  
Boligareal: 67 m<sup>2</sup>  
BBR-areal: 82 m<sup>2</sup>  
Terrasse: 7 m<sup>2</sup>

Adresse:  
Havnegade 10, 1. sal, tv

-  Køle - / Fryseskab
-  Kogeplade m. ovn
-  Tørretumbler
-  Vaskemaskine
-  Fast skab
-  Overskab
-  Opvaskemaskine
- Inddækningskasse



Tegningen er vejledende og ikke endelig målfast  
Version: september 2023.

Vinduesplacering kan være forskellig for de enkelte lejligheder

## Karré 1

# Trælaststræde 2, 1. sal, lejl. 1-7



Lejlighedsnr.: 26, 27, 28, 29, 30, 31, 32

Værelser: 1

Boligareal: 36-37 m<sup>2</sup>


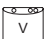

BBR-areal: 44-45 m<sup>2</sup>

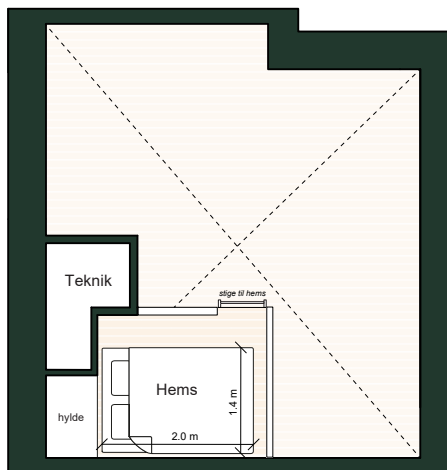
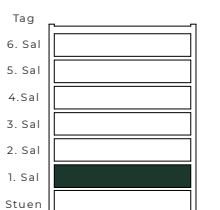
Terrasse: 10 m<sup>2</sup>

Hems: 5 m<sup>2</sup>

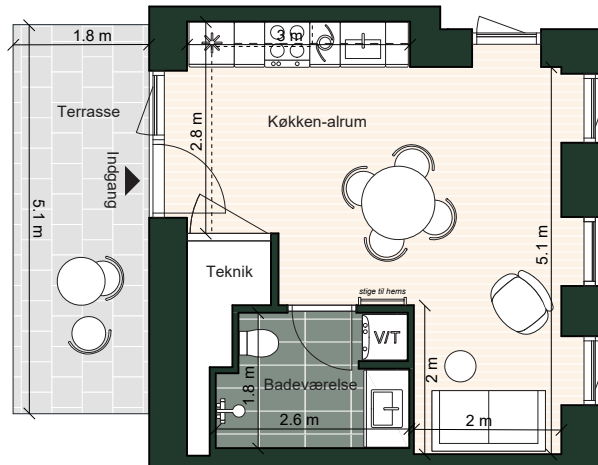
Adresse:

Trælaststræde 2, 1. sal, lejl. 1-7

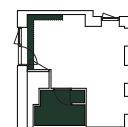
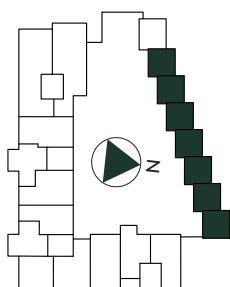
-  Køle - / Fryseskab
-  Kogeplade m. ovn
-  Tørretumbler
-  Vaskemaskine
-  Fast skab
-  Overskab
-  Opvaskemaskine
-  Inddækningskasse



Hems



Stueplan



Områder med nedsænkede lofter

# Karré 1


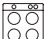
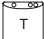
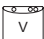


## Trælaststræde 2, 1. sal, lejl. 8

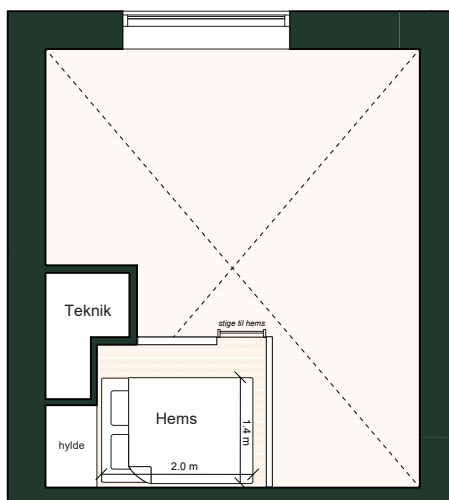
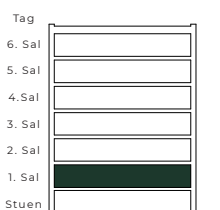


Lejlighedsnr.: 33  
Værelser: 1  
Boligareal: 39 m<sup>2</sup>  
BBR-areal: 47 m<sup>2</sup>  
Terrasse: 10 m<sup>2</sup>  
Hems: 5 m<sup>2</sup>

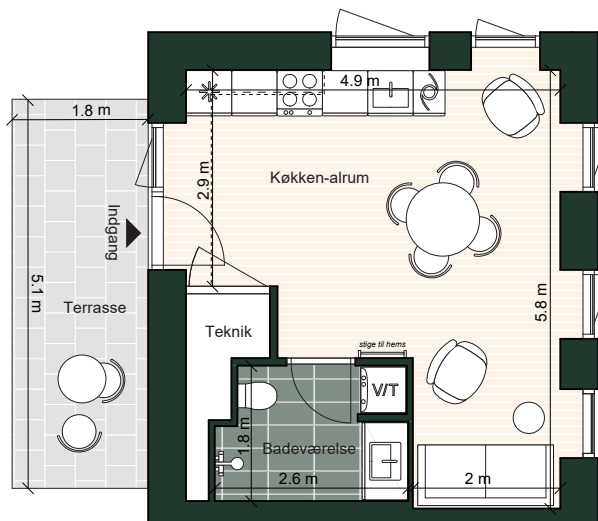
### Adresse:

Trælaststræde 2, 1. sal, lejl. 8

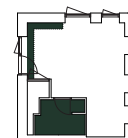
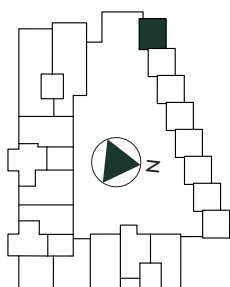
-  Køle - / Fryseskab
-  Kogeplade m. ovn
-  Tørretumbler
-  Vaskemaskine
-  Fast skab
-  Overskab
-  Opvaskemaskine
-  Inddækningskasse



Hems



Stueplan



Områder med nedsænkede lofter

# Karré 1

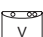
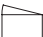



## Saltværkstræde 5, 2.-3. sal, th

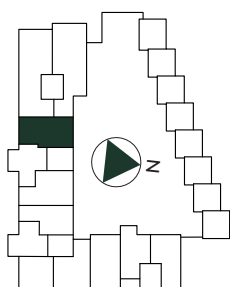
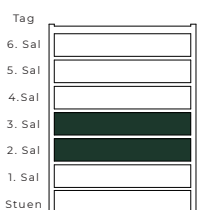
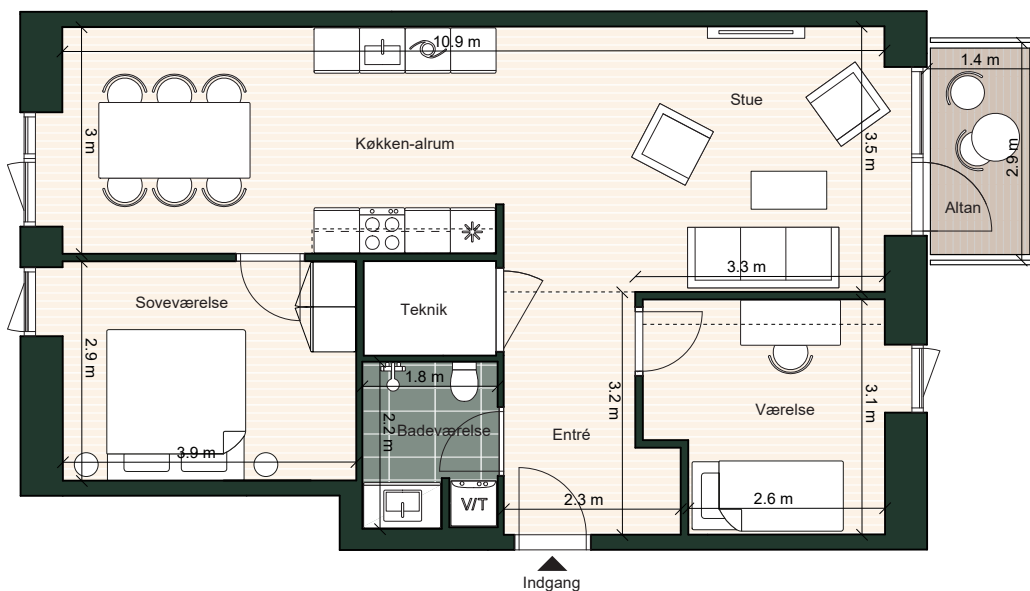


Lejlighedsnr.: 36, 48  
Værelser: 3  
Boligareal: 80 m<sup>2</sup>  
BBR-areal: 89 m<sup>2</sup>  
Altan: 5 m<sup>2</sup>

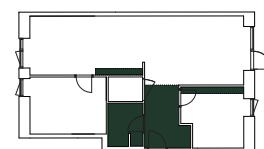
### Adresse:

Saltværkstræde 5, 2.-3. sal, th

-  Køle - / Fryseskab
-  Kogeplade m. ovn
-  Tørretumbler
-  Vaskemaskine
-  Fast skab
-  Overskab
-  Opvaskemaskine
-  Inddækningskasse



1:100 1 2 3 4 5m



Områder med nedsænkede lofter

# Karré 1



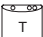
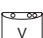
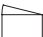



## Saltværkstræde 5, 2.-3. sal, tv

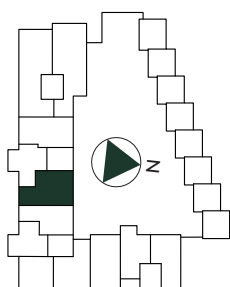
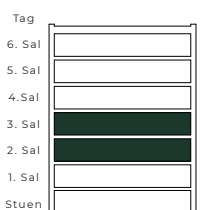
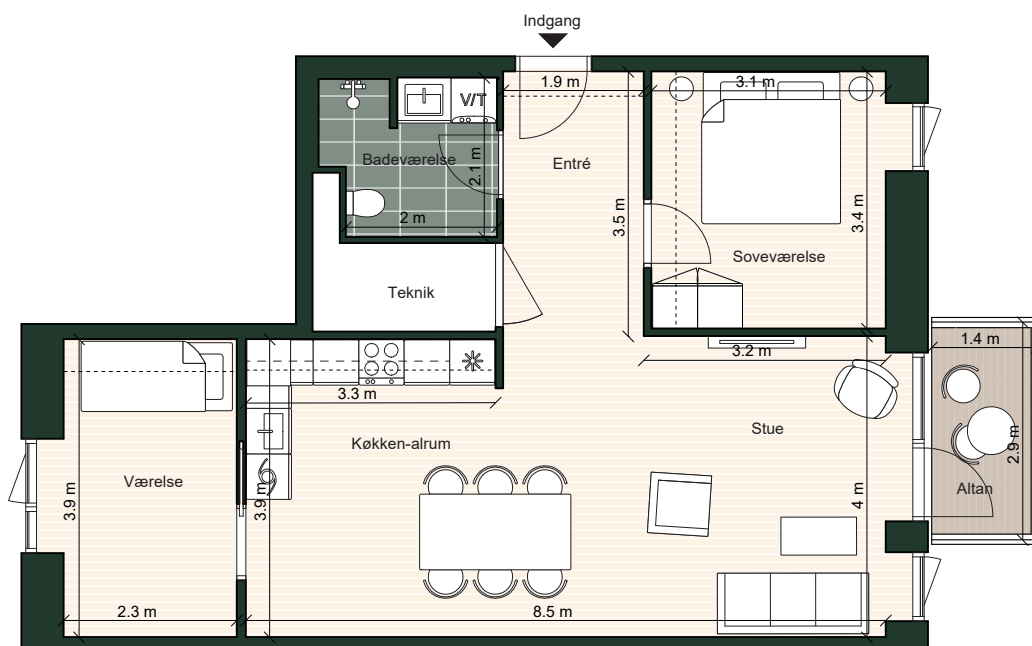


Lejlighedsnr.: 38, 50  
Værelser: 3  
Boligareal: 79 m<sup>2</sup>  
BBR-areal: 88 m<sup>2</sup>  
Altan: 5 m<sup>2</sup>

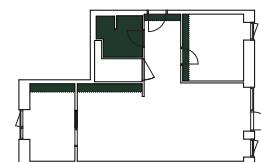
Adresse:

Saltværkstræde 5, 2.-3. sal, tv

-  Køle - / Fryseskab
-  Kogeplade m. ovn
-  Tørretumbler
-  Vaskemaskine
-  Fast skab
-  Overskab
-  Opvaskemaskine
-  Inddækningskasse



1:100 1 2 3 4 5m



Områder med nedsænkede lofter

## Karré 1


# Havnegade 10A, 2.-3. sal, lejl. 4

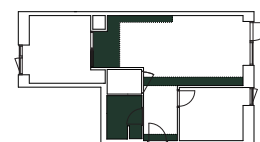
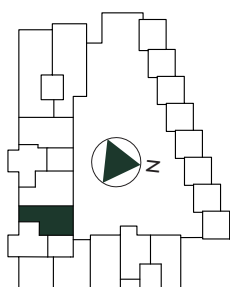
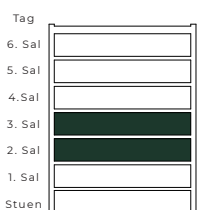
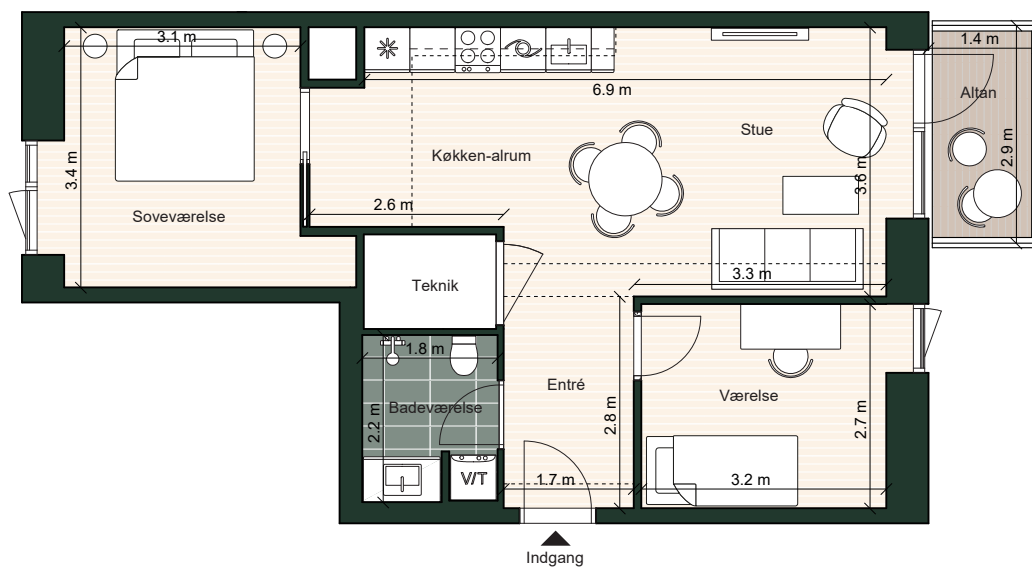


Lejlighedsnr.: 39, 51  
Værelser: 3  
Boligareal: 67 m<sup>2</sup>  
BBR-areal: 78 m<sup>2</sup>  
Altan: 5 m<sup>2</sup>

### Adresse:

Havnegade 10A, 2.-3. sal, lejl. 4

-  Køle - / Fryseskab
-  Kogeplade m. ovn
-  Tørretumbler
-  Vaskemaskine
-  Fast skab
-  Overskab
-  Opvaskemaskine
-  Inddækningskasse



1:100 1 2 3 4 5m

Tegningen er vejledende og ikke endelig målfast  
Version: september 2023.

Vinduesplacering kan være forskellig for de enkelte lejligheder



## Karré 1



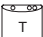
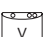
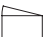


# Havnegade 10A, 2.-3. sal, lejl. 1

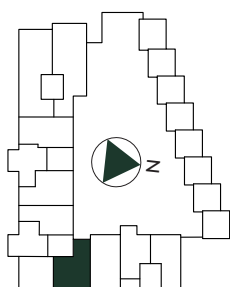
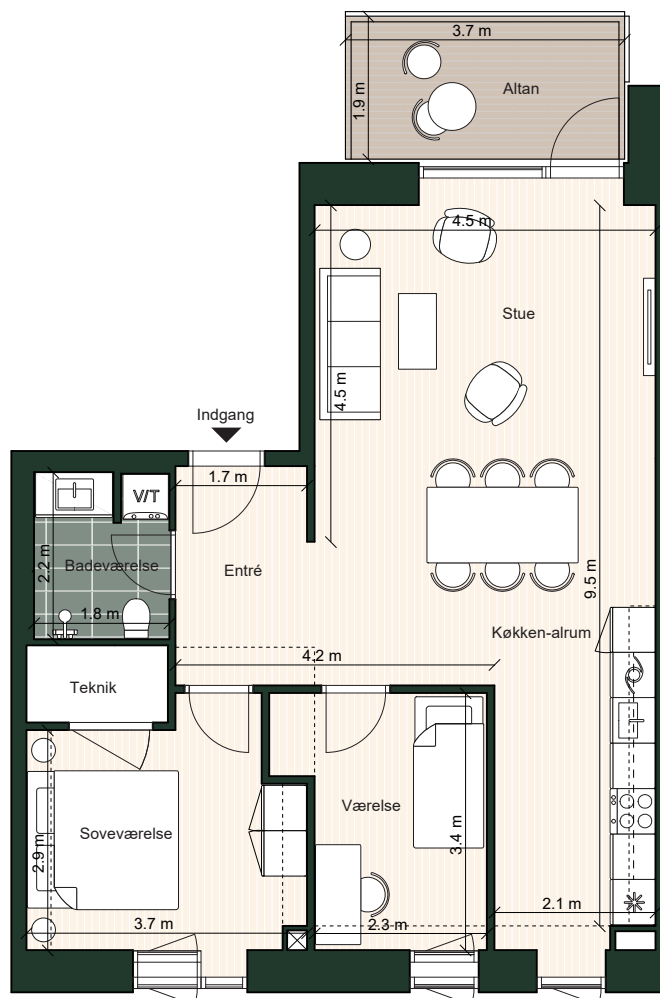
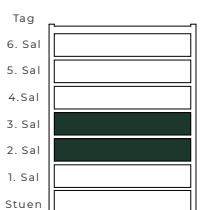


Lejlighedsnr.: 42, 54  
Værelser: 3  
Boligareal: 80 m<sup>2</sup>  
BBR-areal: 91 m<sup>2</sup>  
Altan: 8 m<sup>2</sup>

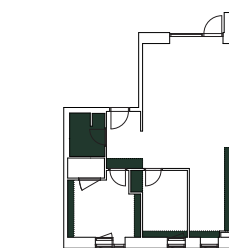
### Adresse:

Havnegade 10A, 2.-3. sal, lejl. 1

-  Køle - / Fryseskab
-  Kogeplade m. ovn
-  Tørretumbler
-  Vaskemaskine
-  Fast skab
-  Overskab
-  Opvaskemaskine
-  Inddækningskasse



1:100 1 2 3 4 5m



Områder med nedsænkede lofter

# Karré 1



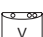



## Havnegade 10, 2.-3. sal, th

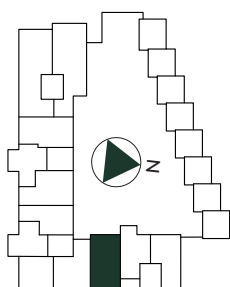
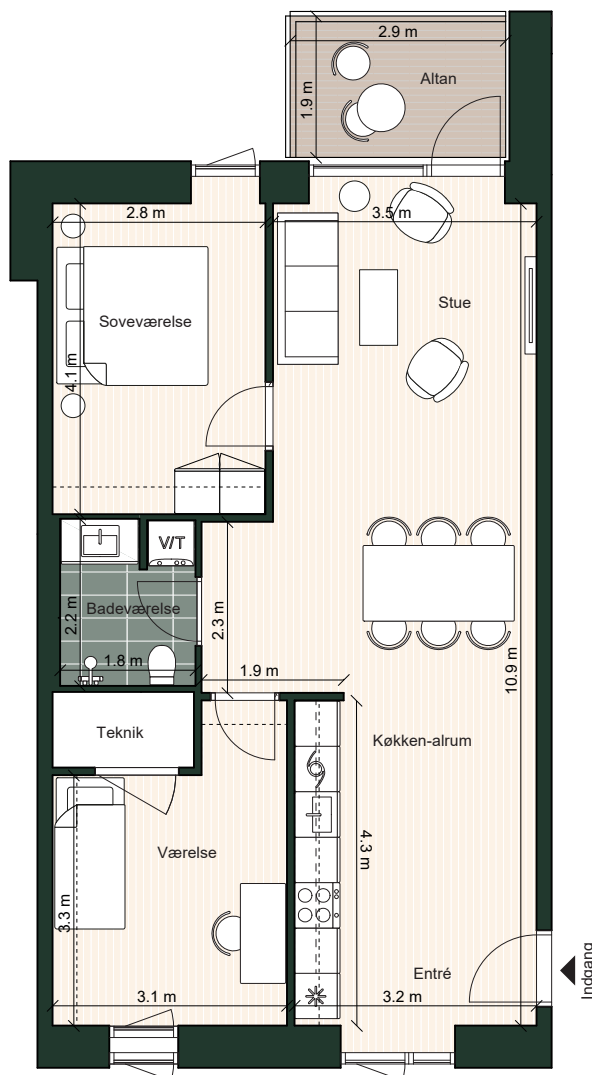
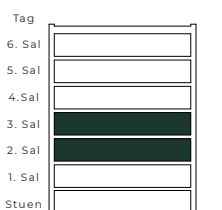


Lejlighedsnr.: 43, 55  
Værelser: 3  
Boligareal: 80 m<sup>2</sup>  
BBR-areal: 96 m<sup>2</sup>  
Altan: 6 m<sup>2</sup>

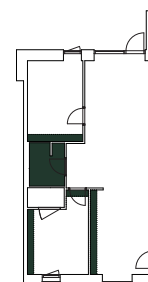
Adresse:

Havnegade 10, 2.-3. sal, th

-  Køle - / Fryseskab
-  Kogeplade m. ovn
-  Tørretumbler
-  Vaskemaskine
-  Fast skab
-  Overskab
-  Opvaskemaskine
- Inddækningskasse



1:100 1 2 3 4 5m



Områder med nedsænkede lofter

Tegningen er vejledende og ikke endelig målfast  
Version: september 2023.

Vinduesplacering kan være forskellig for de enkelte lejligheder


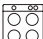
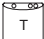
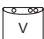


# Karré 1

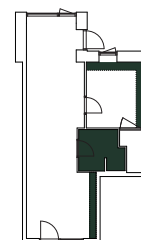
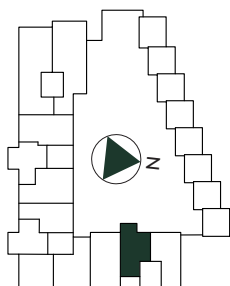
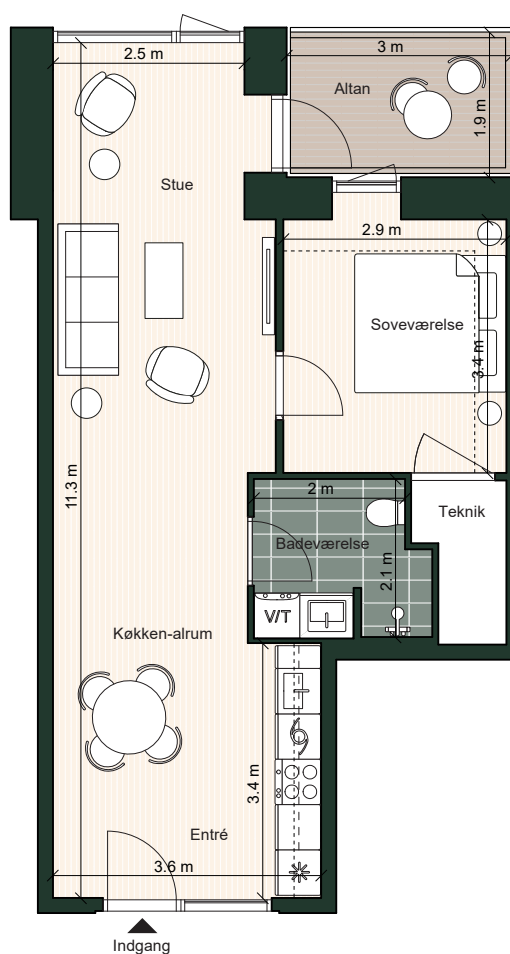
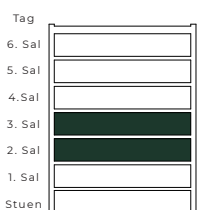
## Havnegade 10, 2.-3. sal, mf



Lejlighedsnr.: 44, 56  
Værelser: 2  
Boligareal: 59 m<sup>2</sup>  
BBR-areal: 75 m<sup>2</sup>  
Altan: 6 m<sup>2</sup>

Adresse:  
Havnegade 10, 2.-3. sal, mf

-  Køle - / Fryseskab
-  Kogeplade m. ovn
-  Tørretumbler
-  Vaskemaskine
-  Fast skab
-  Overskab
-  Opvaskemaskine
-  Inddækningskasse



Områder med nedsænkede lofter

## Karré 1

# Havnegade 10, 2.-5. sal, tv



Lejlighedsnr.: 45, 57, 61, 65

Værelser: 2



Boligareal: 67 m<sup>2</sup>

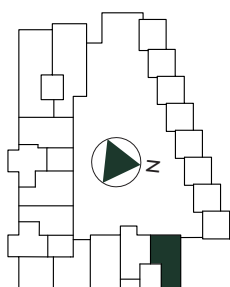
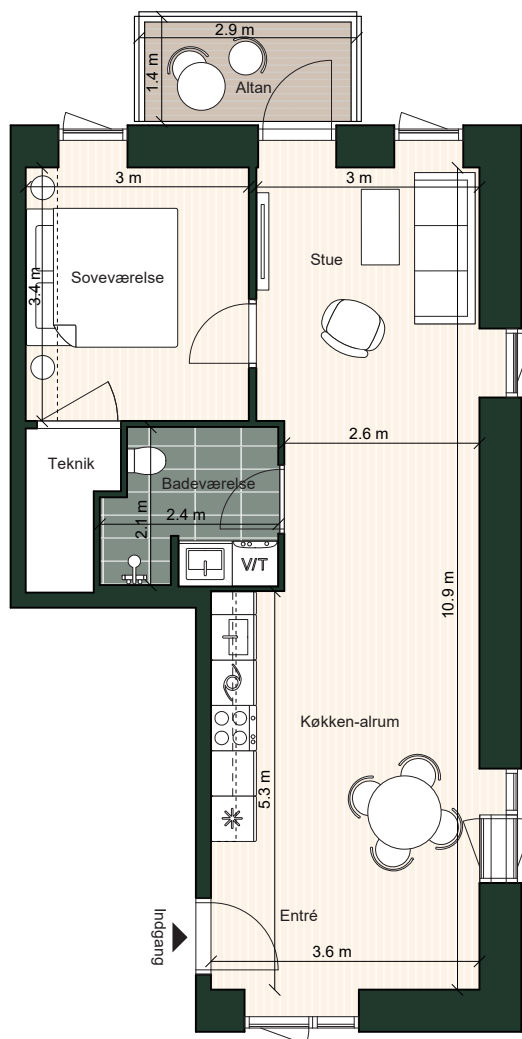
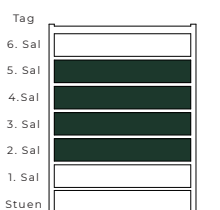
BBR-areal: 82 m<sup>2</sup>

Altan: 5 m<sup>2</sup>

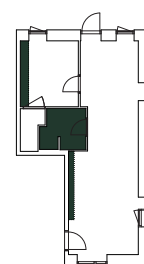
### Adresse:

Havnegade 10, 2.-5. sal, tv

-  Køle - / Fryseskab
-  Kogeplade m. ovn
-  Tørretumbler
-  Vaskemaskine
-  Fast skab
-  Overskab
-  Opvaskemaskine
-  Inddækningskasse



1:100 1 2 3 4 5m



Områder med nedsænkede lofter

Tegningen er vejledende og ikke endelig målfast  
Version: september 2023.

Vinduesplacering kan være forskellig for de enkelte lejligheder


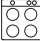
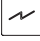
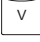


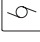
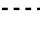
# Karré 1

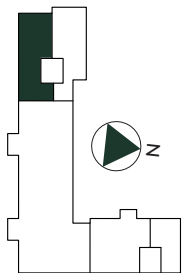
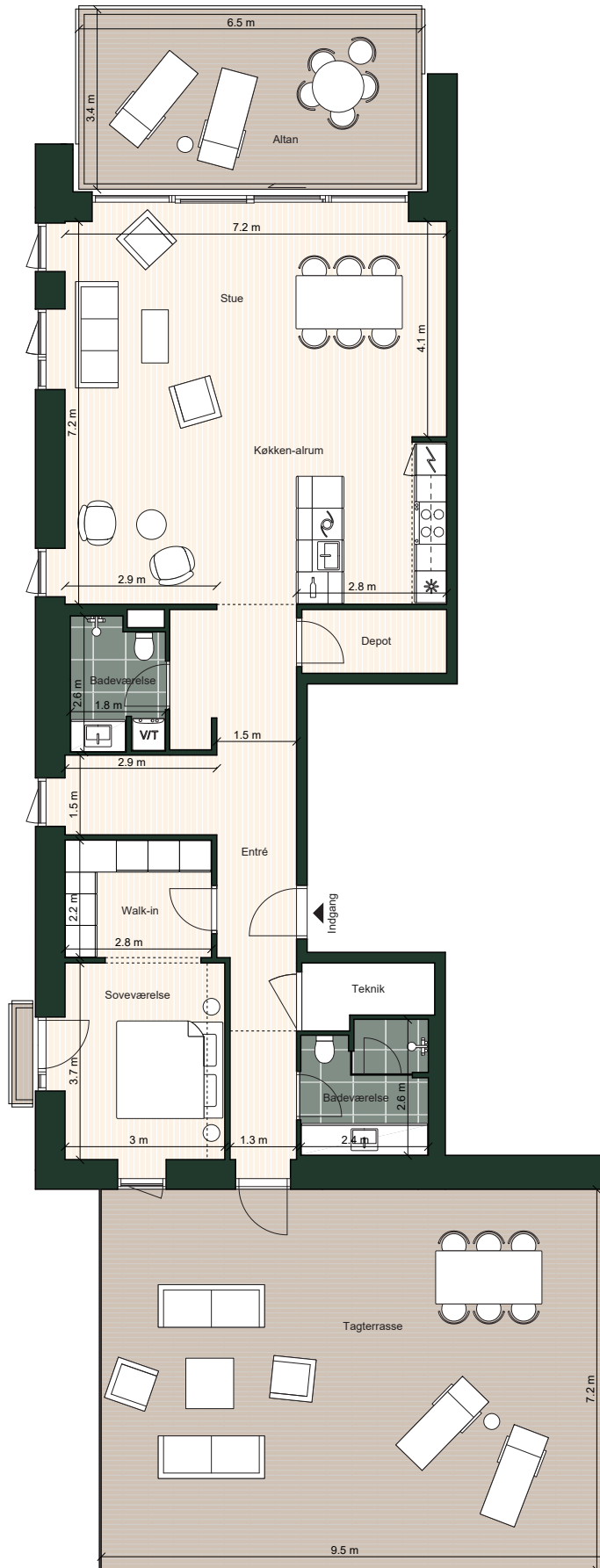
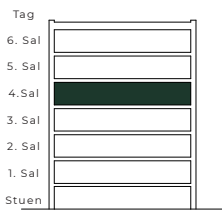
## Saltværkstræde 9, 4. sal, th



Lejlighedsnr.: 58  
 Værelser: 2  
 Boligareal: 134 m<sup>2</sup>  
 BBR-areal: 148 m<sup>2</sup>  
 Altan: 1 + 23 m<sup>2</sup>  
 Tagterrasse: 69 m<sup>2</sup>

Adresse:  
 Saltværkstræde 9, 4. sal, th

-  Køle - / Fryseskab
-  Kogeplade
-  Ovn
-  Tørretumbler
-  Vaskemaskine
-  Fast skab
-  Overskab
-  Opvaskemaskine
-  Inddækningskasse
-  Vinkøleskab



1:125 1 2 3 4 5m

Områder med nedsænkede lofter

# Karré 1

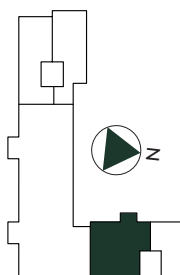
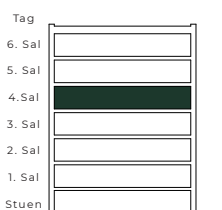
## Havnegade 10, 4. sal, th



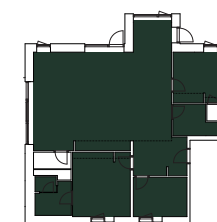
Lejlighedsnr.: 60  
Værelser: 4  
Boligareal: 153 m<sup>2</sup>  
BBR-areal: 169 m<sup>2</sup>  
Altan: 6 + 6 m<sup>2</sup>  
Tagterrasse: 43 m<sup>2</sup>

Adresse:  
Havnegade 10, 4. sal, th

-  Køle - / Fryseskab
-  Kogeplade
-  Ovn
-  Tørretumbler
-  Vaskemaskine
-  Fast skab
-  Overskab
-  Opvaskemaskine
-  Inddækningskasse
-  Vinkøleskab



1:125 1 2 3 4 5m



Områder med nedsænkede lofter

# Karré 1

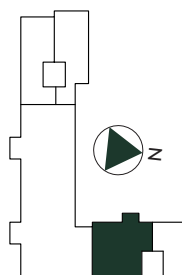
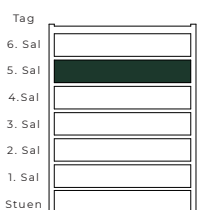
## Havnegade 10, 5. sal, th



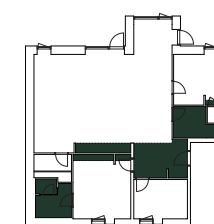
Lejlighedsnr.: 64  
Værelser: 4  
Boligareal: 153 m<sup>2</sup>  
BBR-areal: 169 m<sup>2</sup>  
Altan: 6 + 6 m<sup>2</sup>

Adresse:  
Havnegade 10, 5. sal, th

-  Køle - / Fryseskab
-  Kogeplade
-  Ovn
-  Tørretumbler
-  Vaskemaskine
-  Fast skab
-  Overskab
-  Opvaskemaskine
-  Inddækningskasse
-  Vinkøleskab



1:100 1 2 3 4 5m



Områder med nedsænkede lofter